

COATING PROJECT HIGHLIGHT

Name: Michaels Arts & Crafts
Berkshire Crossing

Address: Pittsfield, MA 01201

Roof Surface & Age: EPDM; >15 years

Issues: Leaks at seams, holes in membrane, degraded caulking as well as looking to reduce heat transfer into the building.

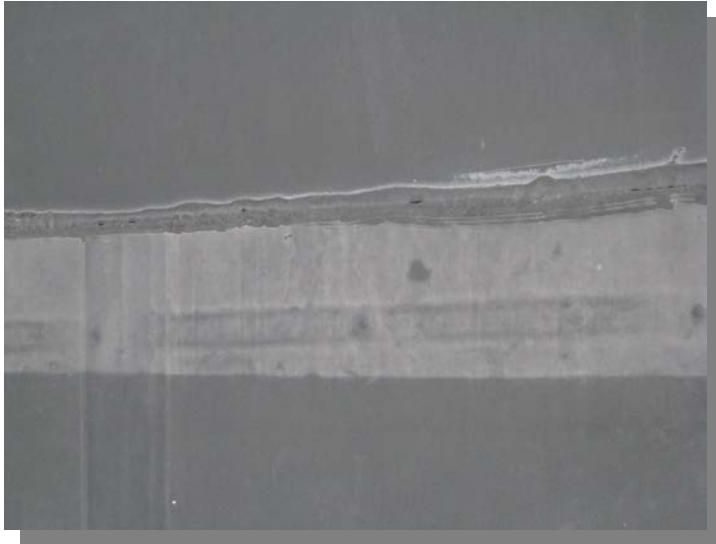
Coating System: 502 RC-W Elasto-Kote (Coating System)
550 Patch-N-Go (Seam Treatment)



**Berkshire Crossing
Pittsfield, MA**

**EPDM
Sealant Joint Degrading**





During inspection it was discovered that sealant used at joints was degraded and seam laps were opening due to age. If left untreated this roof would need to be replaced.

After roof was cleaned using 507 SPC Primer Wash along with power washing, all curbs and seams of the EPDM roof were re-sealed using 550 Patch-N-Go self-adhering tape.





Parapets and curbs were coated first with one coat of 502 Base coating. The coating was applied by airless spray as well as rolled on at perimeter edges.

**502 RC-W Elasto-Kote Finish
White applied over the previously
applied 502 Base coating.**



**502 RC-W Finish White applied
over 502 Base coating. Coating
system has sealed small surface
cracks to prevent the infiltration
of water, reinforced and
waterproofed seams and
provides a highly reflective
surface that is Energy Star
rated, CRRC listed and eligible
for LEED points.**