

Typical low slope SSR system with improper panel lap repair and ramifications:



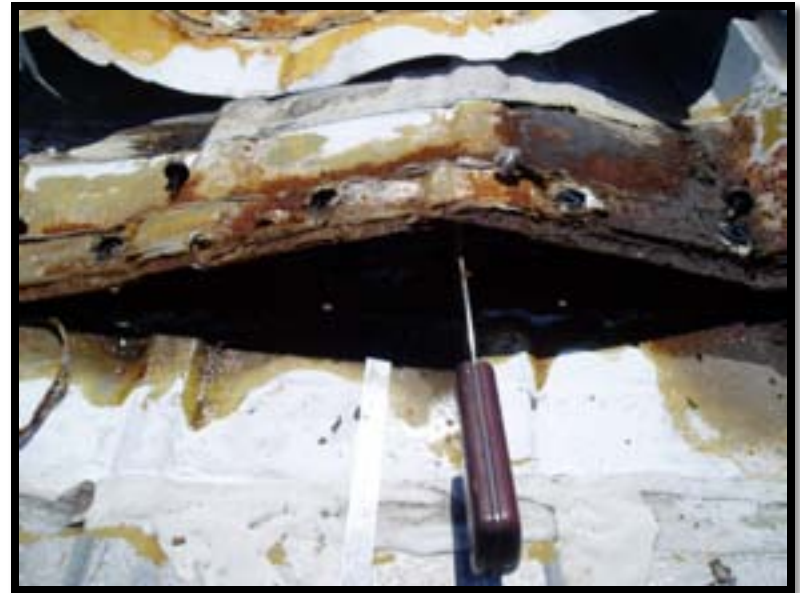
Improper external sealing material application to SSR system results in ponding water, more leaks and panel deterioration



Typical low slope SSR system with improper panel lap repair and ramifications:



Improper external sealing material application to SSR system results in ponding water, more leaks and panel deterioration



Low slope SSR system illustrating proper manufacturer panel lap repair process for a watertight seal:



#1 Remove external material applications and fasteners



#2 Separate panels and clean internal surfaces



#3 Install triple “elastomeric-butyl” bead mastic between panels



#4 Inject tube grade butyl at ribs, reassemble and install 1st oversize fasteners